

## mTiny Safety Instructions

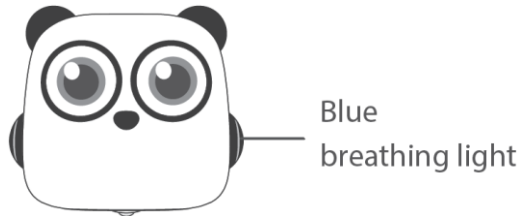


# Contents

- Sleep/Wake up..... 1
- Check the current battery level ..... 1
- Button instruction .....2
- Enable/disable the joystick .....2
- Pairing .....3
- Joystick calibration.....4
- Firmware update .....6
- Status indicator .....8
- Cautions .....9
- Specifications .....10
- FCC statement.....10
- FCC Radiation Exposure Statement ..... 11
- Declaration of Conformity ..... 11

## Sleep/Wake up

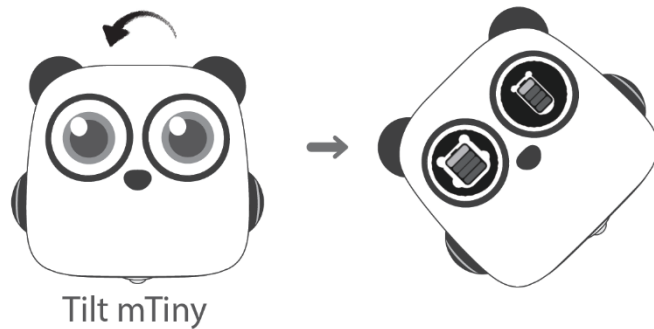
When the displays turn off and the side indicators turn blue breathing lights, mTiny is in Sleep mode.



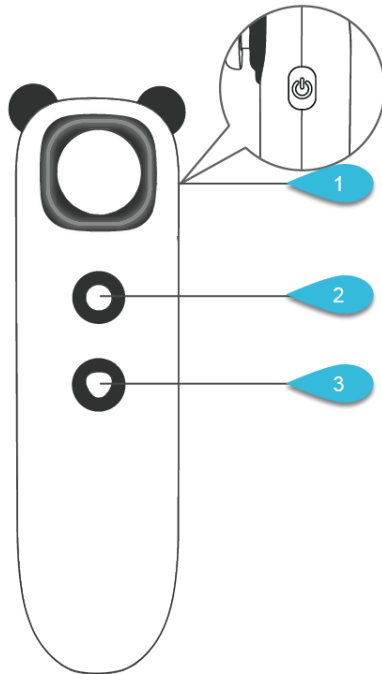
Move the joystick on the tap pen controller or shake mTiny to wake it up.

## Check the current battery level

Tilt mTiny and hold it for a while, then the battery level of both mTiny and the tap pen controller will be displayed.



# Button instruction



## 1: Power button

Long press the button to turn on or turn off the tap pen controller.

## 2: Confirm button

Run the input program, or repeat the last program.

## 3: Stop button

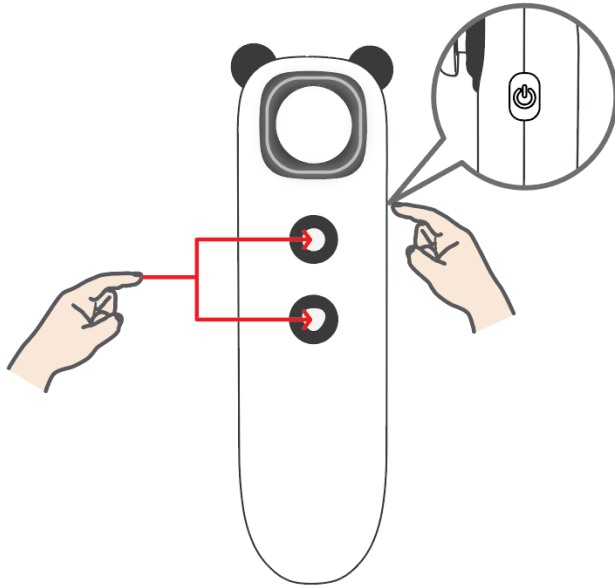
Stop the action in progress.

# Enable/disable the joystick

In the mTiny Discover Kit, the joystick of the tap pen controller is disabled by default. To use the joystick to control mTiny, you need to enable the joystick first.

In the mTiny Coding Kit, the joystick of the tap pen controller is enabled by default. You can use it to control mTiny without enabling it.

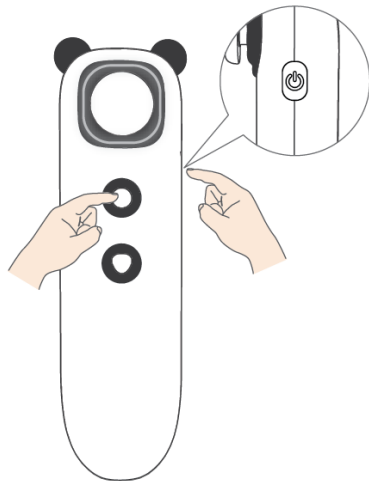
Hold down the power button, confirm button, and stop button at the same time to enable or disable the joystick of the tap pen controller.



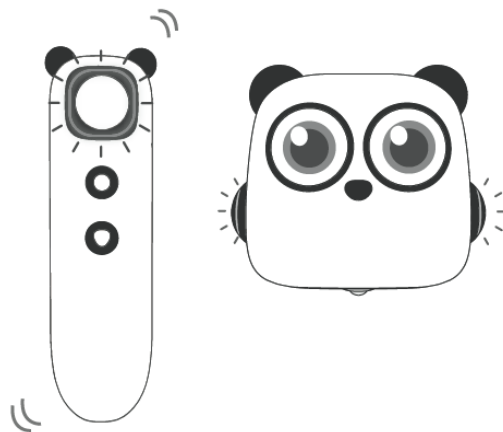
## Pairing

Before pairing, restart the robot and the tap pen controller. Then follow the instructions below to complete pairing:

1. Press and hold these two buttons for 2 seconds.



2. Move the tap pen controller close to mTiny to start pairing. The indicator will alternately flash blue and red.



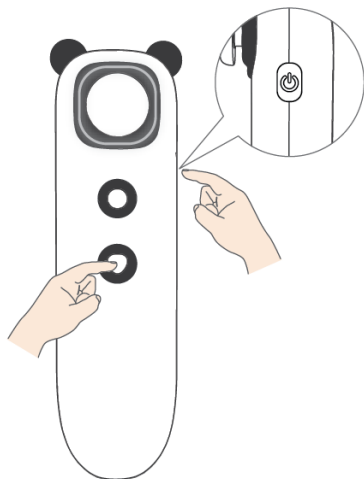
After the pairing is successful, a blue light indicator is steady on.

## Joystick calibration

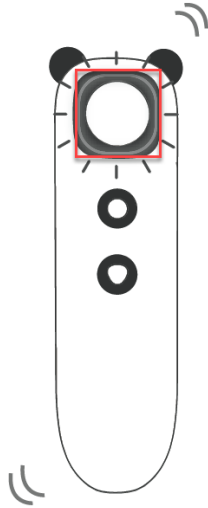
The joystick might misbehave after used for a long term, follow the instruction below to calibrate it to maintain precise control.

1. Begin calibration.

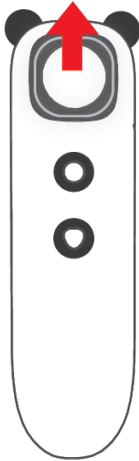
Press and hold these two buttons for 2 seconds.



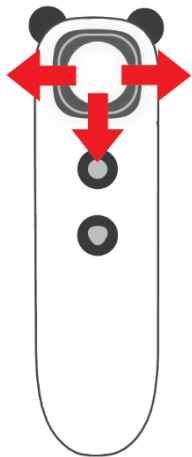
The indicator alternatively flashes blue and green.



2. Push the joystick fully forward and then release.

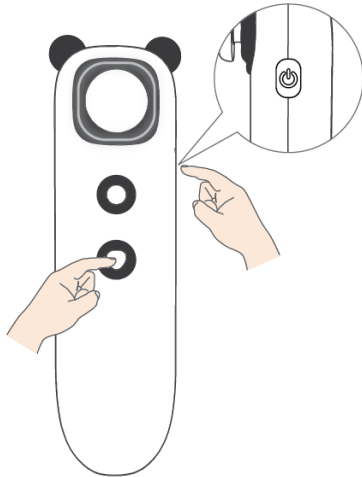


3. Push/pull the joystick fully in the other three directions and then release to complete calibration.



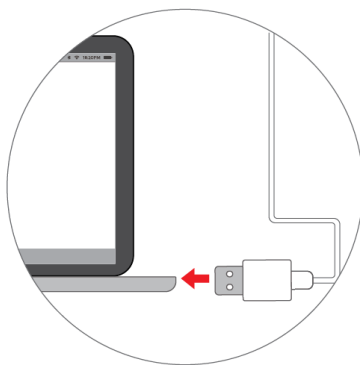
4. Exit calibration.

Press and hold these two buttons for 2 seconds.

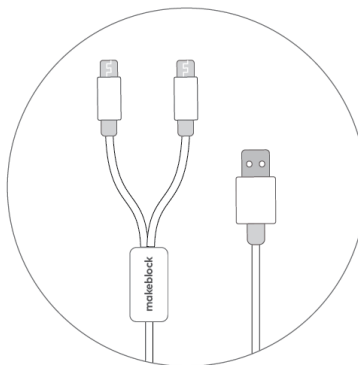


## Firmware update

### 1. Preparation for update



A computer with USB ports



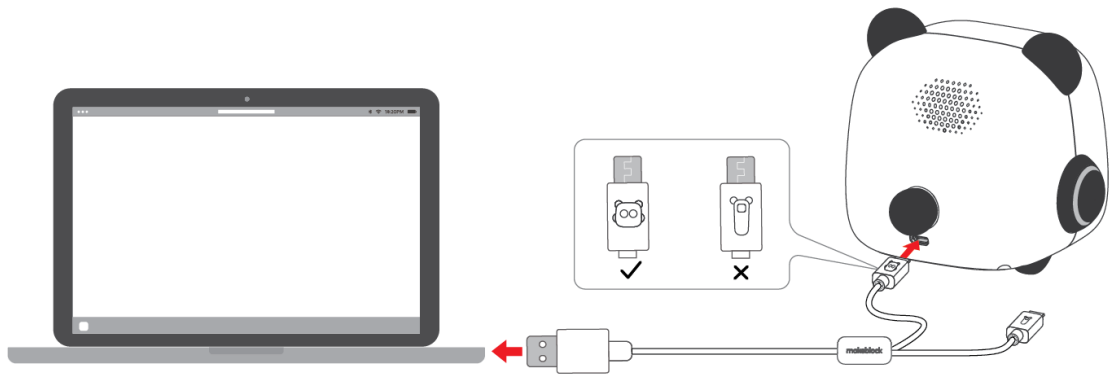
USB cable in the product package



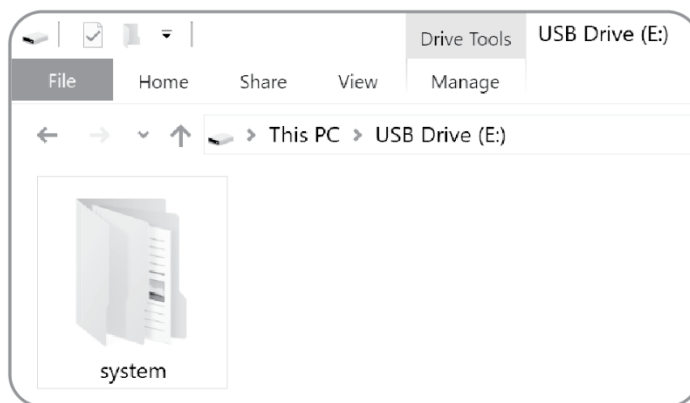
Paired mTiny and tap pen controller  
(with at least 50% battery level)

2. Go to <https://www.makeblock.com/support/ps-mtiny#firmware> and download the latest firmware update package.
3. Use the USB cable with the mTiny icon to connect mTiny to the computer.

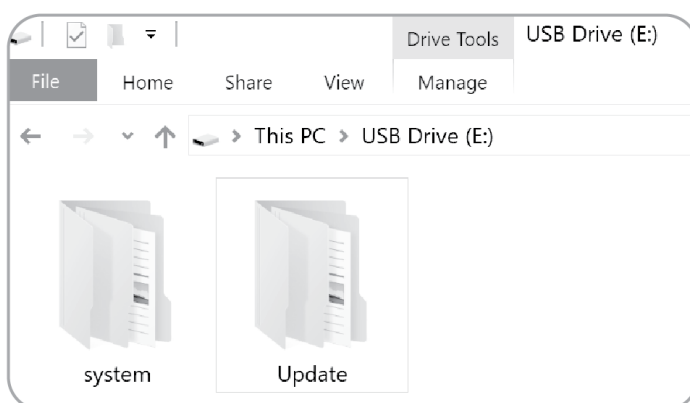




4. After connection, the computer will recognize mTiny as a USB drive. Open it, a folder named “system” will be displayed.



5. Extract the update package. Find the folder named “update” in the extracted directory. Copy and paste the whole “update” folder into the root directory of mTiny’s disk.



6. Disconnect mTiny from the computer.

7. Restart mTiny and the tap pen controller, and the update process will start automatically.

The update process will take 3 to 5 minutes. Please be patient.  
There will be a prompt sound when the update is successful.

During the update process, mTiny will automatically check the connection with tap pen controller and the current battery level. The process might stop if those conditions are not met. Please pair again or charge the battery.



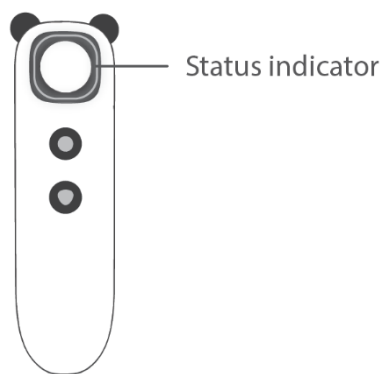
Update completed. Try mTiny's new features!

## Status indicator



Status indicator


Blue breathing light	Sleep mode
Red breathing light	Charging
Green light steady on	Charging complete
Red light flashes	Low battery
Blue light flashes	Not paired with tap pen controller
The indicator alternately flashes red and blue	Pairing with tap pen controller
Blue light steady on	Pairing succeeded



Blue breathing light	Sleep mode
Red breathing light	Charging
Green light steady on	Charging complete
Red light flashes	Low battery
Blue light flashes	Not paired with mTiny
The indicator alternately flashes red and blue	Pairing with mTiny
Blue light steady on	Pairing succeeded

## Cautions

- The product is recommended for children over 4 years old.
- Do not allow children under 3 years old to use the product.
- An adult must be present when children use the product.
- Do not put the product at the edge of a high place to prevent damage by falling.
- Do not disassemble, repair, or modify the product yourself to prevent from the product failure.
- Battery is not replaceable.
- Do not put the product in water or fire, or expose it to a damp or high temperature environment to avoid product failure or safety hazards.
- Do not use or charge the product at a temperature exceeding the operating temperature range.
- Please fully charge the product before leaving it idle, and charge it at least once every 3 months.
- Please use the recommended adapter (5V/2A) to charge the product.
- The power adapter (not included in the product package) for the product is not a toy.
- Misuse of the power adapter might result in electric shock hazard.
- Please shut down and disconnect the product from the external power supply before cleaning the product with liquid.

- Do not connect the product to more than the recommended quantity of power supplies.
- This product could only be charged under adult's supervision.
- Check the cables, plugs, casing, and other components for any damage on a regular basis. Stop using the product immediately if any damage occurs and get it repaired.
- The toy is only to be connected to Class II equipment bearing the following symbol "".
- Faults may occur when the product is charged at a temperature lower than 0°C or higher than 40°C.

## Specifications

Battery (mTiny)	1,800 mAh lithium battery
Micro USB input voltage (mTiny)	DC 5V
Micro USB input current (mTiny)	1.5 A
Battery (tap pen controller)	300 mAh lithium battery
Micro USB input voltage (tap pen controller)	DC 5V
Micro USB input current (tap pen controller)	270 mA
Transmission mode	2.4G
Frequency range	2400 MHz–2480 MHz
Working distance	Within a 10-meter radius (in an open field)
Operating temperature	0°C–40°C
Storage temperature	–10°C→+55°C

## FCC statement

This device complies with Part 15 of the FCC Rules. Operation is subject to the following two conditions:

- This device may not cause harmful interference, and
- This device must accept any interference received, including interference that may cause undesired operation.

Warning: Changes or modifications not expressly approved by the party responsible for compliance could void

the user's authority to operate the equipment.

NOTE: This equipment has been tested and found to comply with the limits for a Class B digital device, pursuant to Part 15 of the FCC Rules. These limits are designed to provide reasonable protection against harmful interference in a residential installation. This equipment generates uses and can radiate radio frequency energy and, if not installed and used in accordance with the instructions, may cause harmful interference to radio communications. However, there is no guarantee that interference will not occur in a particular installation. If this equipment does cause harmful interference to radio or television reception, which can be determined by turning the equipment off and on, the user is encouraged to try to correct the interference by one or more of the following measures:

- Reorient or relocate the receiving antenna.
- Increase the separation between the equipment and receiver.
- Connect the equipment into an outlet on a circuit different from that to which the receiver is connected.
- Consult the dealer or an experienced radio/TV technician for help.

## **FCC Radiation Exposure Statement**

This equipment complies with FCC radiation exposure limits set forth for an uncontrolled environment. This equipment should be installed and operated with minimum distance 20cm between the radiator & your body.



### **Declaration of Conformity**

Declaration of conformity Hereby, Makeblock Co., Ltd., declares that this product is in compliance with the essential requirements and other relevant provisions of Directive RED 2014/53/EU and the RoHS directive 2011/65/EU.