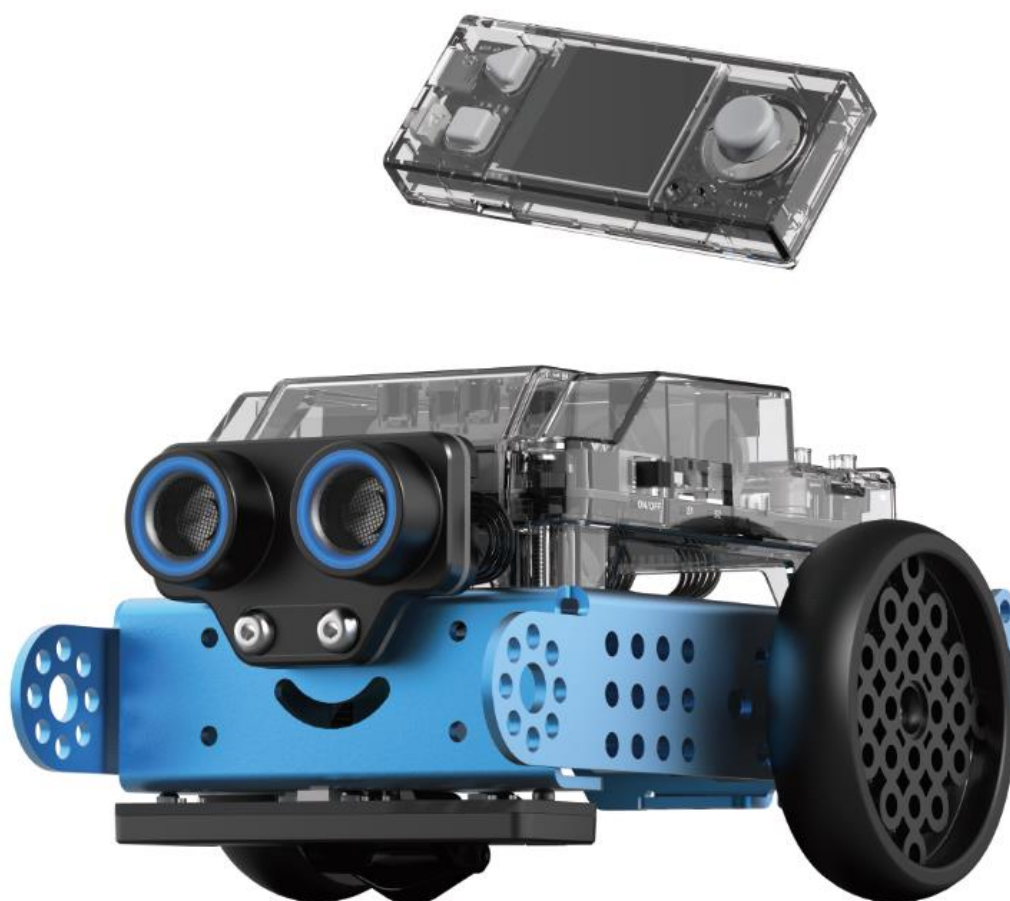


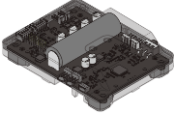
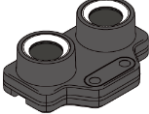
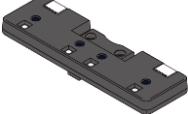
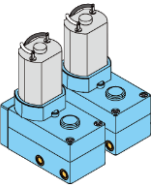
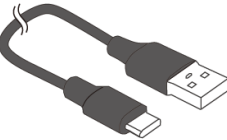
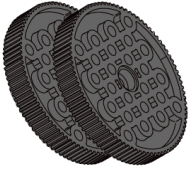


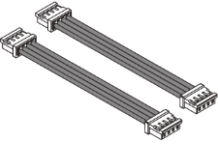
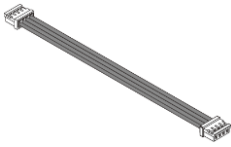
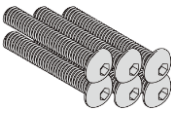
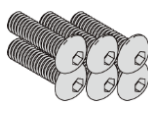
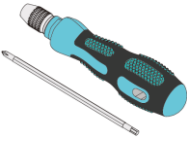
## Quick Start Guide



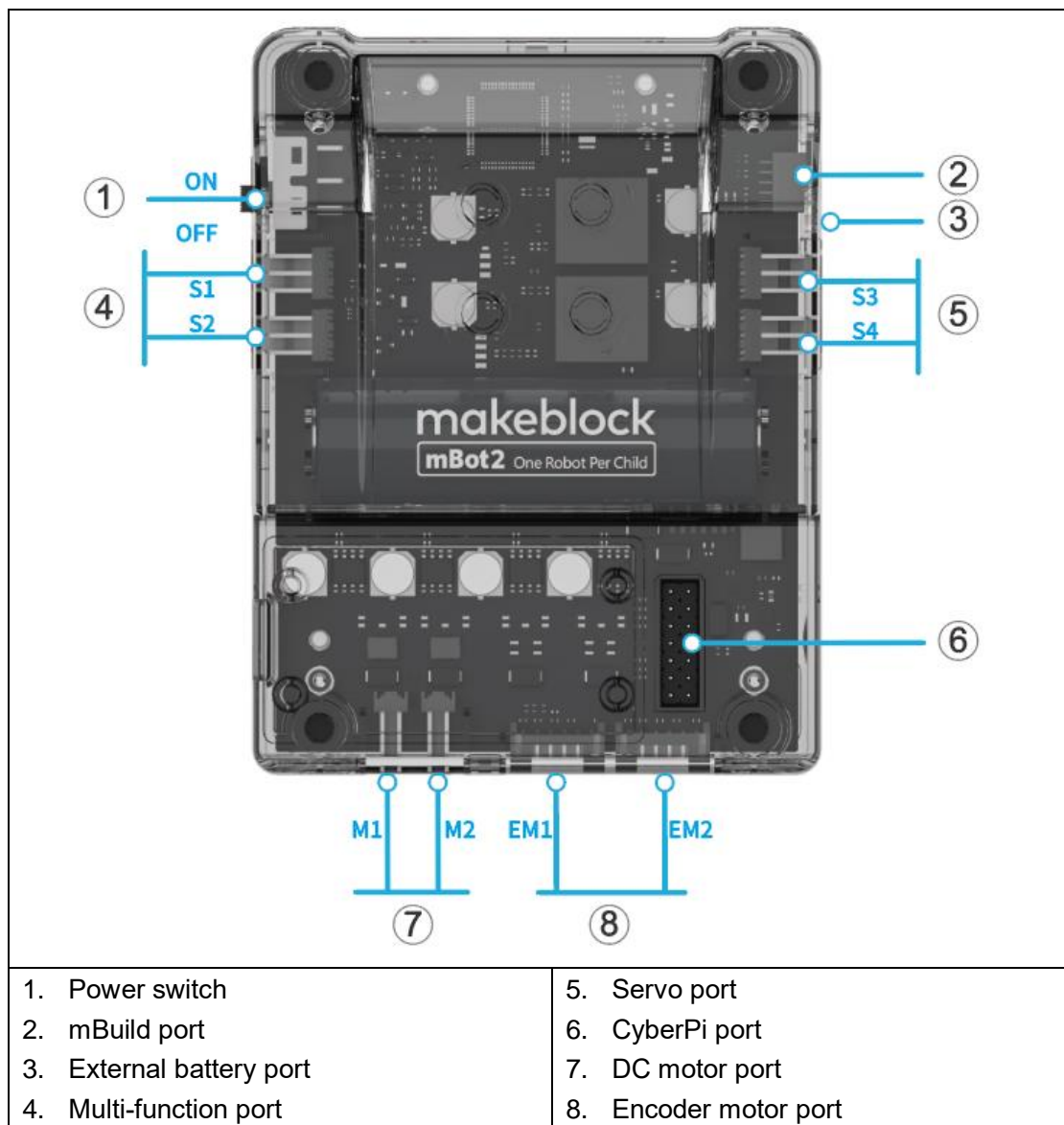
# Contents

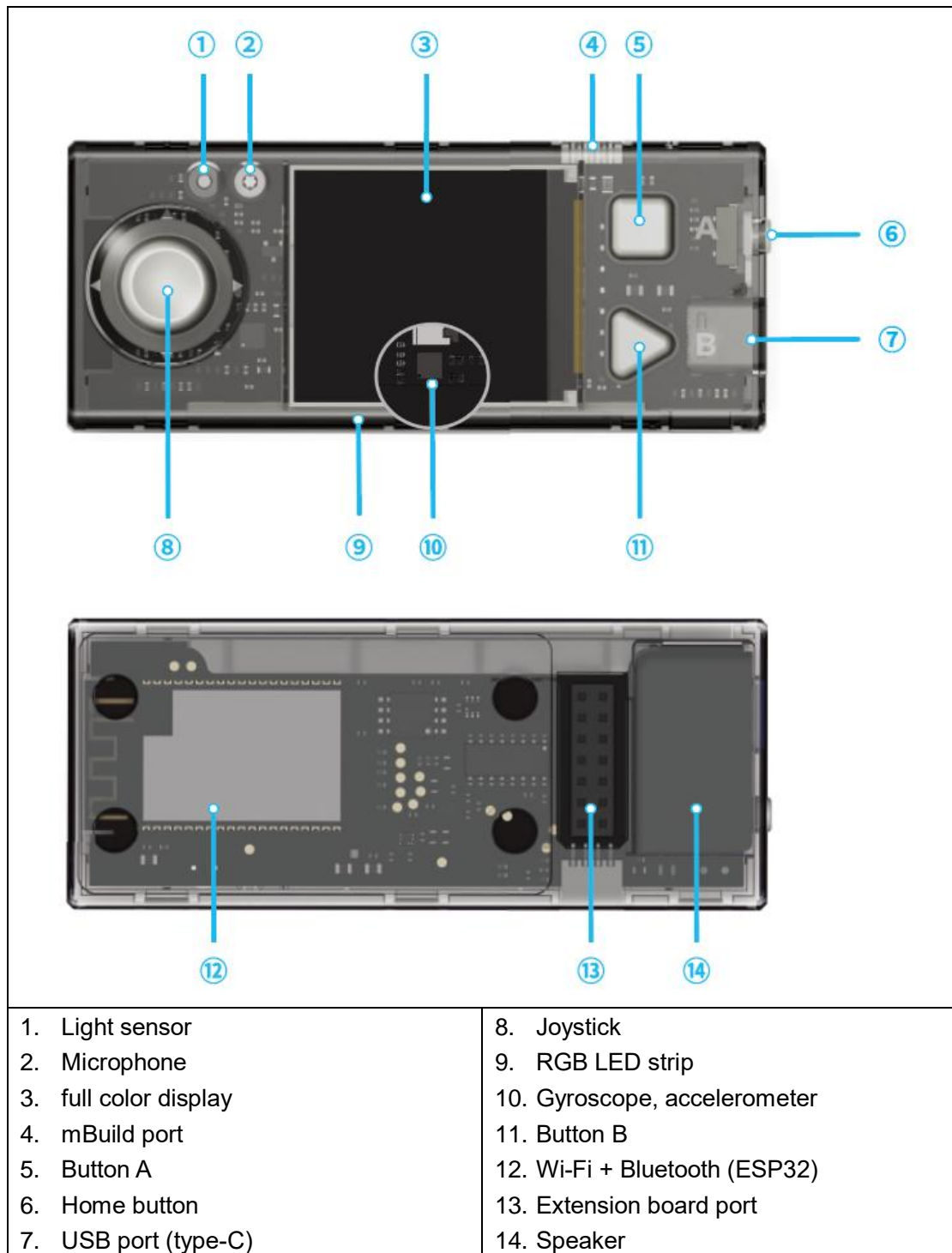
List of items.....	1
Meet the parts of mBot2 .....	2
Screwdriver use .....	4
Build mBot2.....	5
Program mBot2.....	8
Cautions .....	9

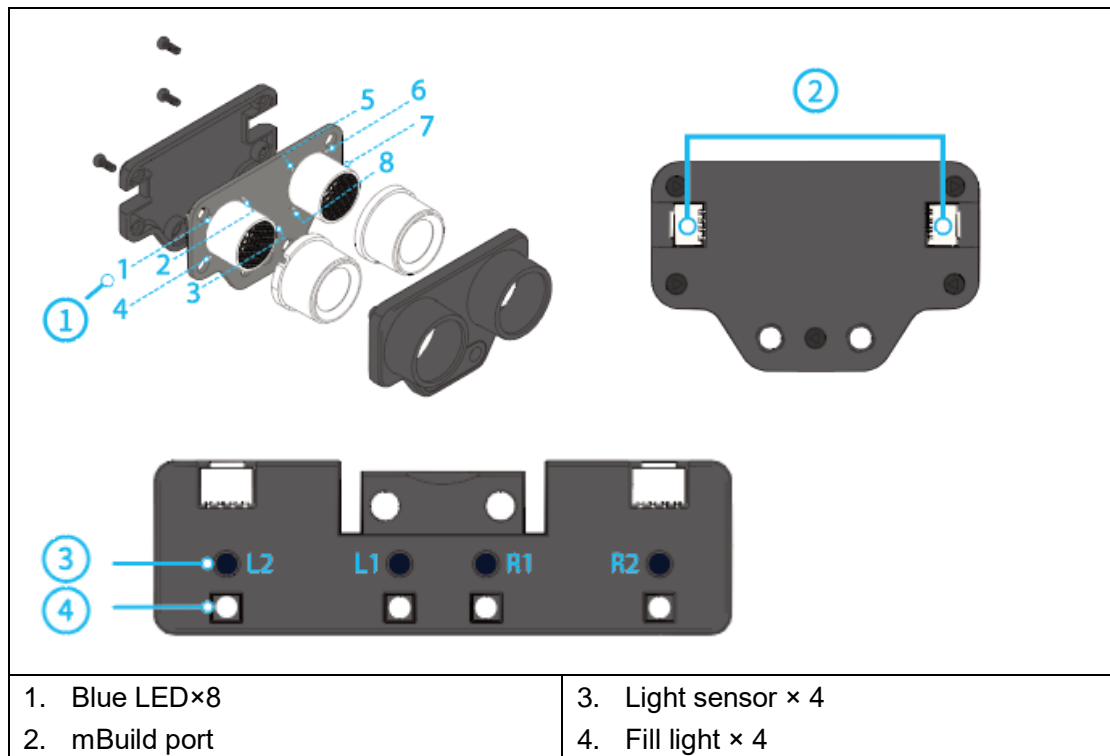
# List of items

			
CyberPi	mBot2 Shield	Ultrasonic sensor 2	Quad RGB sensor
			
Encoder motor	Chassis	USB cable	Wheel hub
			
Tire	Mini wheel	Motor cable	mBuild cable (10 cm)
			
mBuild cable (20 cm)	Line-following map	Screw M4*25 mm	Screw M4*14 mm
			
Screw M4*8 mm	Screw M2.5*12 mm	Screwdriver	

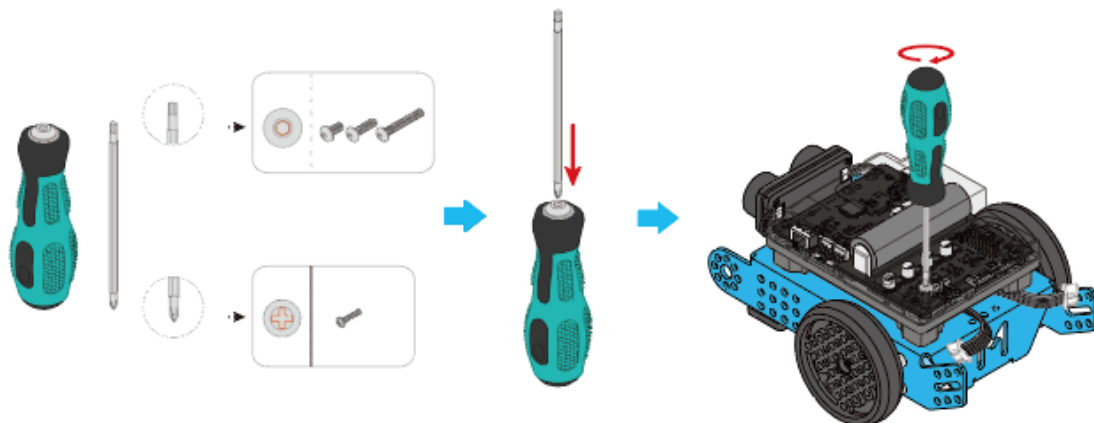
# Meet the parts of mBot2



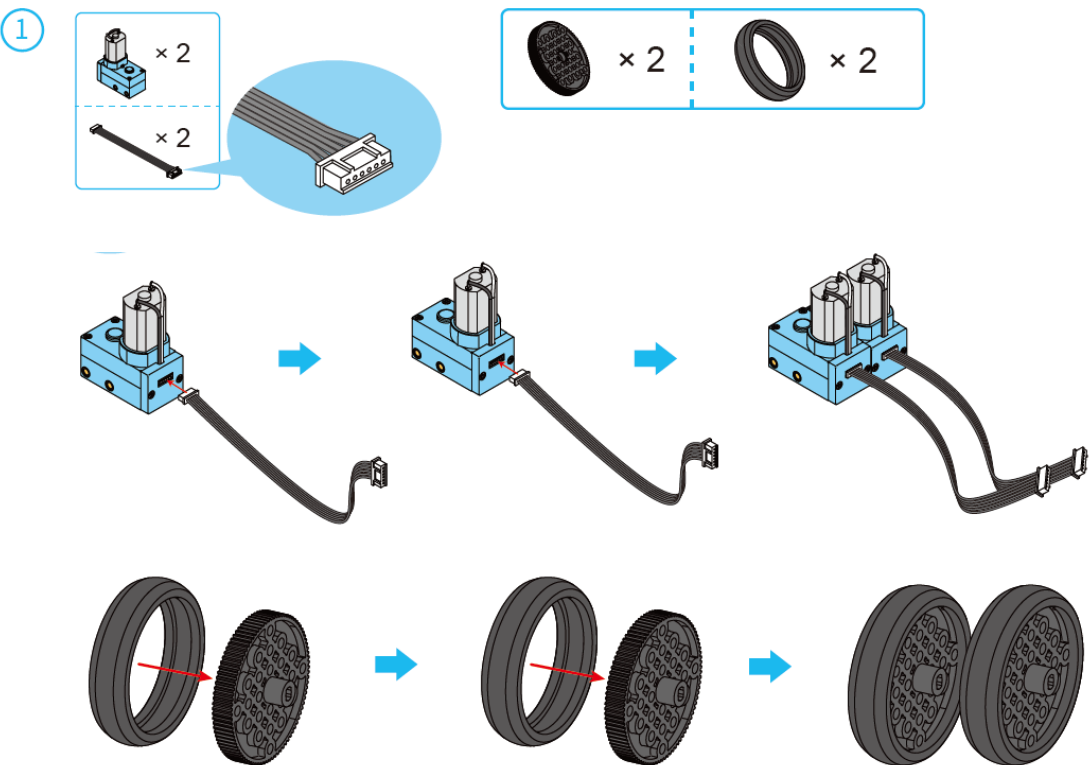
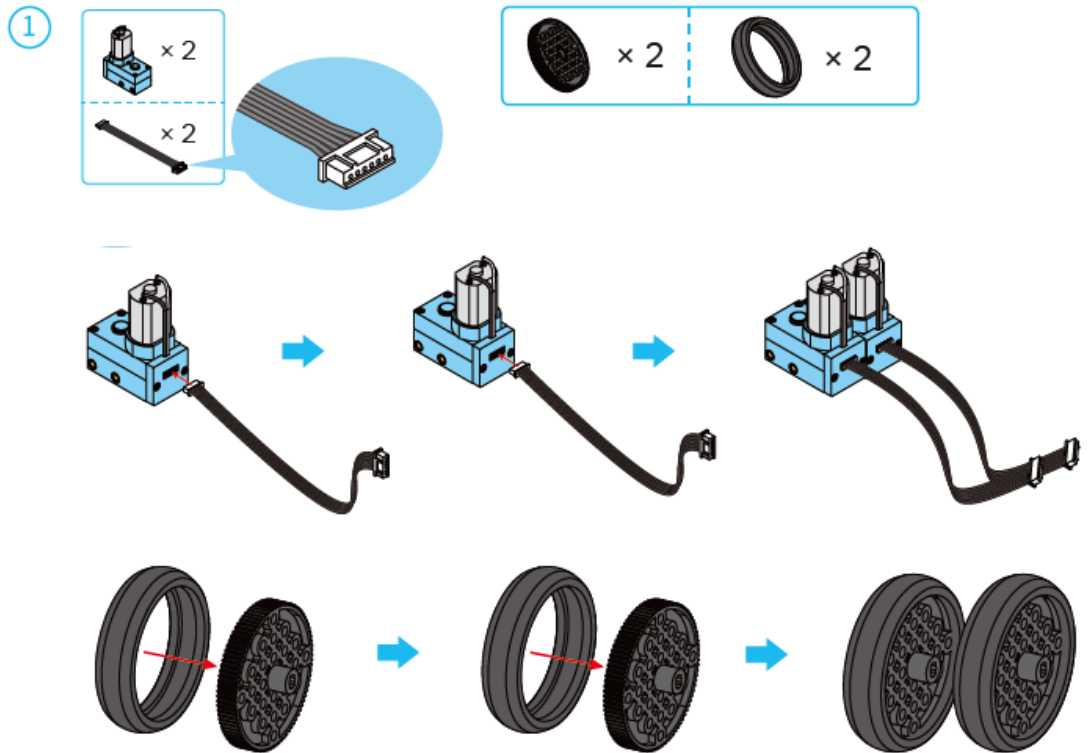






## Screwdriver use

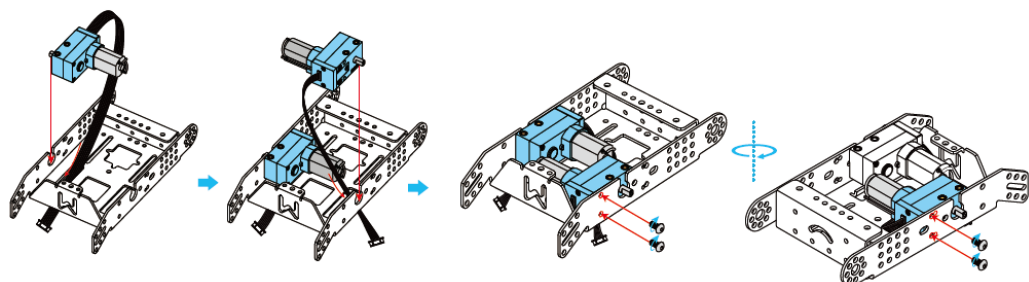


# Build mBot2



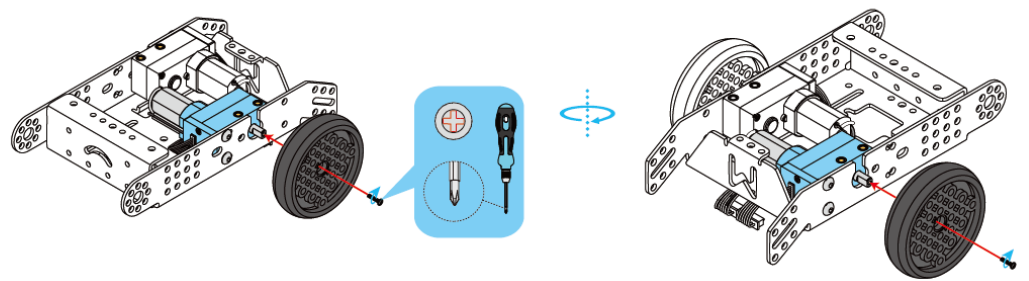
2

 × 1	 × 4	 1:1 M4 * 8mm
---	---	---







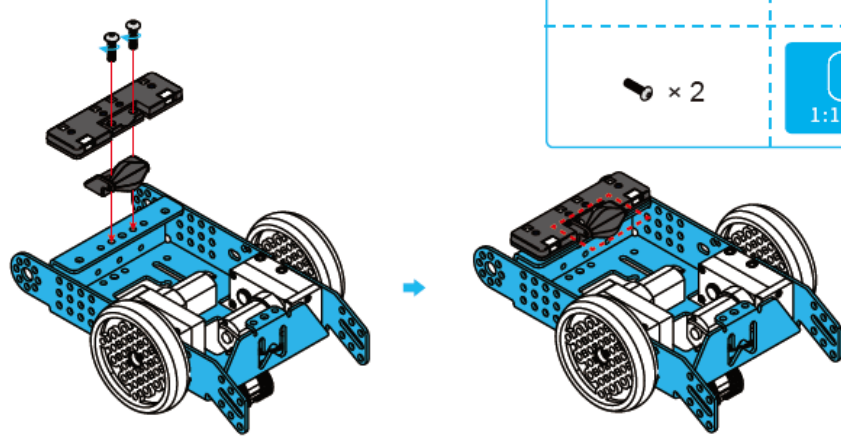
3

 × 2	 1:1 M2.5 * 12mm
---	--



4

 × 1	 × 1
 × 2	 1:1 M4 * 14mm

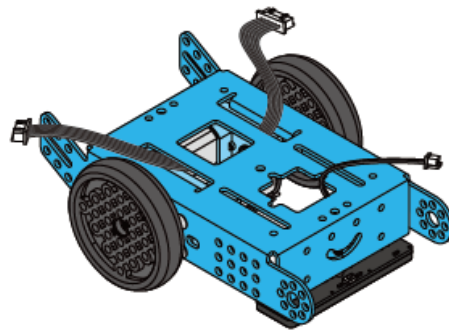
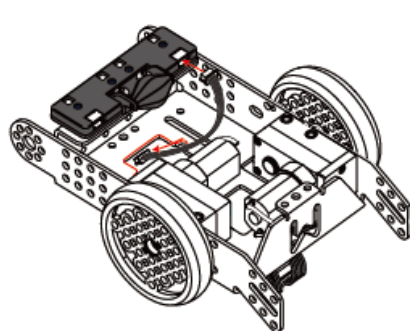




5

× 1 10cm ✓

× 1 20cm ✗



6



× 1



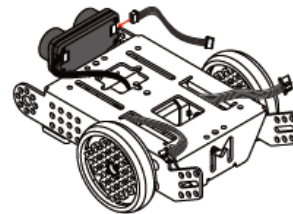
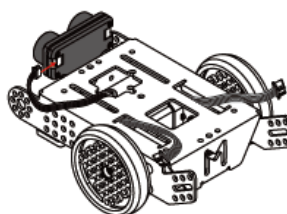
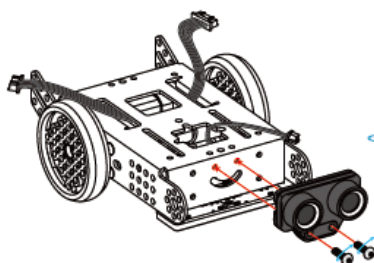
× 1



× 2



1:1 M4 \* 14mm



7



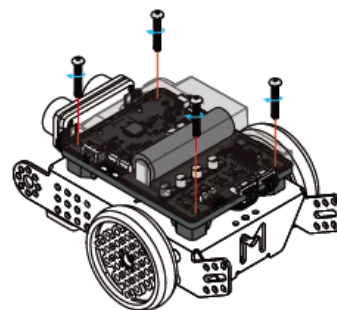
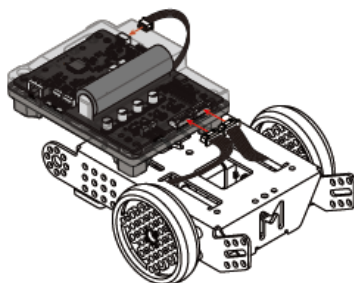
× 1



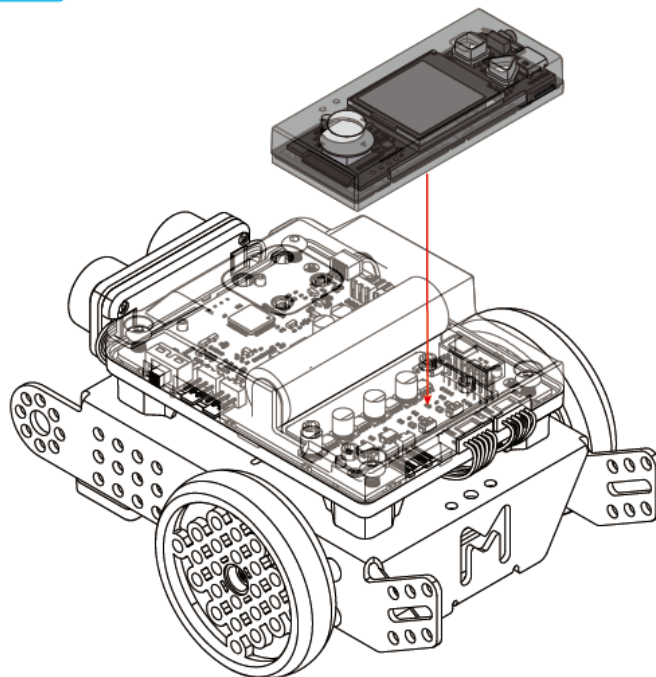
× 4



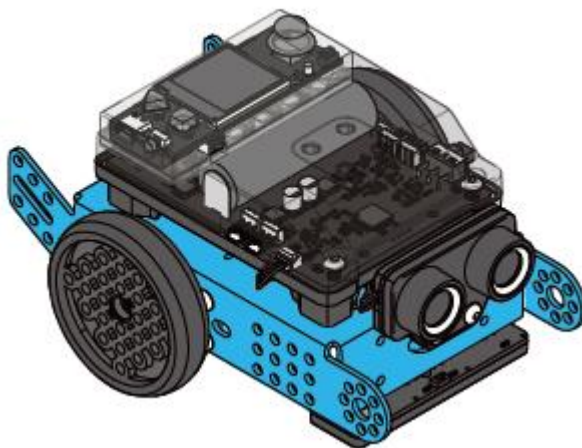
1:1 M4 \* 25mm



8



9



Assembly completed !

## Program mBot2

For details about how to program mBot2, go to [support.makeblock.com](https://support.makeblock.com) and search for mBot2.

# Cautions

- • Not suitable for children under ages 3.
- • Children need to be accompanied by adults when using the product.
- • To avoid damage as a result of falling down, please don't put the product on the edges of high places.
- • To avoid the product from damage, please don't disassemble, repair, or modify this product yourself.
- • To avoid the product from damage or safety incidents, please don't place this product in water, fire, or environments of humidity or high temperature.
- • Please don't use this product or charge for this product in any environment at a temperature higher than the operating temperature range of this product.
- • Please fully charge the product for storage and recharge it every 3 months when the product is left unused.
- • Please use the recommended adapter (5V / 2A adapter) to charge the product.
- • Please ensure that the product is powered off and disconnected from any external power supply when liquid is used to clean the product.
- • Please check the wires, plugs, housings, or other parts periodically and stop using them if any damage has been found until they are well repaired.